

Your arrival to orangedental in Biberach a.d. Riß

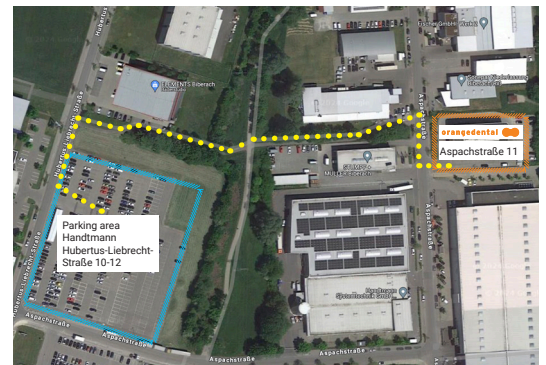


Parking options for April 26, 2024:

a) Parking bays in the Aspachstraße

b) Parking area courtesy of Handtmann
Hubertus-Liebrecht-Straße 10-12

→ 300 m / 4 min. walk from orangedental.



We look forward to your visit!

orangedental 
premium innovations

Arrival by car

Intersection of the B30, B312, B465/highways A7 & A8, approx. 35 km

- Coming from Stuttgart (130 km) A 8 towards Munich, exit Ulm/Friedrichshafen, continue on the four-lane B 30 towards Friedrichshafen to Biberach
- Coming from Munich (150 km) A 96 Memmingen, continue on A 7 towards Ulm, exit Biberach/Berkheim, continue on B 312 to Biberach
- Coming from Lake Constance from Friedrichshafen (65 km) via the B 30 to Biberach from Constance (80 km) with the Lake Constance ferry to Meersburg, via the B 33 to Ravensburg, continue via the B 30 to Biberach
- Coming from Freiburg (180 km) take the B 31 to Geisingen, continue on the B 311 via Tuttlingen, Meßkirch to Riedlingen, continue on the B 312 to Biberach

Arrival by train

- InterRegio station on the Ulm - Friedrichshafen line
- Connection to the InterCity network of Deutsche Bahn AG via Ulm
- Half-hourly connections Biberach - Ulm as part of the „Oberschwaben-Taktes“.

By plane to Biberach

- Stuttgart-Echterdingen (120 km) Airport
- Friedrichshafen (60 km) Bodensee-Airport
- Memmingen (43 km) Allgäu-Airport
- Biberach airfield

